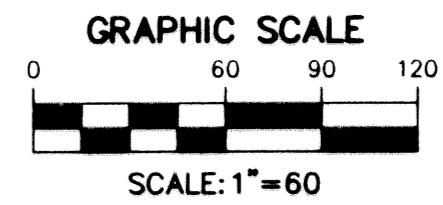
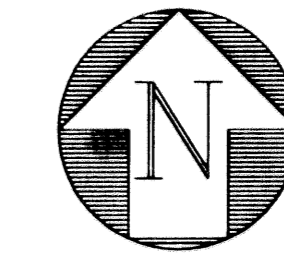


WESTLAKE

Being a parcel of land, lying in Section 19, Township 42 South, Range 43 East,
Town of Lake Park, Palm Beach County, Florida.



SHEET 3 OF 3
JUNE 2002

MATCHLINE SEE SHEET 2 OF 3

TRACT "A"
RESIDENTIAL DEVELOPMENT TRACT
AREA= 17.838 ACRES

TRACT "C"

TRACT "B"
WATER MANAGEMENT TRACT
AREA= 4.493 ACRES

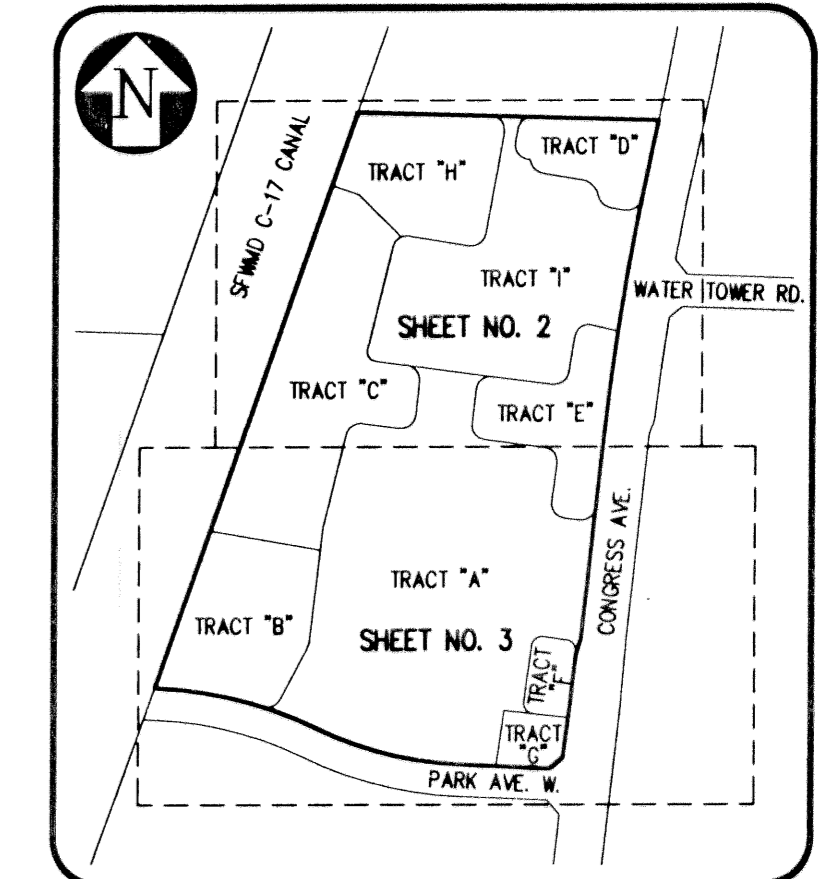
PORTION OF
TRACT "B"
ALSO A
CONSERVATION EASEMENT
DEDICATED TO THE SOUTH FLORIDA
WATER MANAGEMENT DISTRICT
ORB. 13579, PAGE 1680

TOTAL AREA= 49.610 ACRES

TRACT "E"

TRACT "F"
WATER
MANAGEMENT
TRACT
AREA= 0.774
ACRES

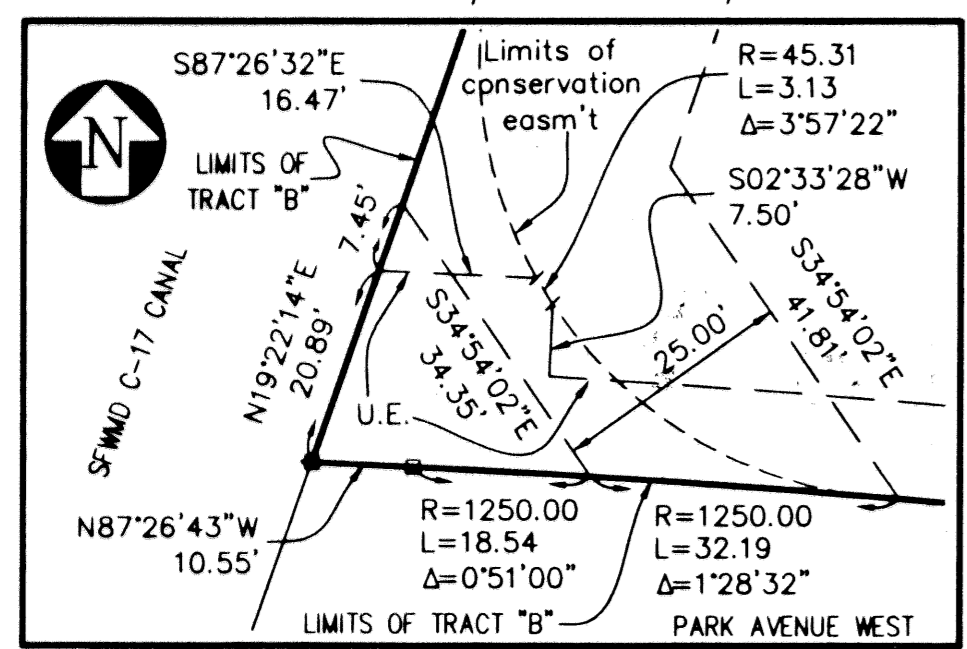
TRACT "G"
AREA= 0.770
ACRES



LEGEND

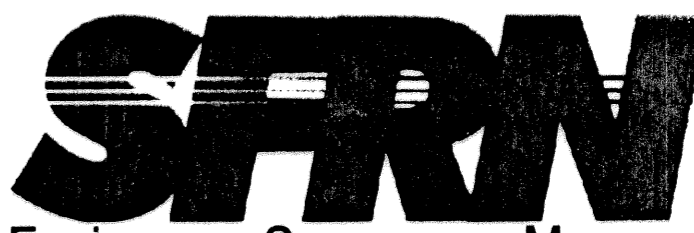
R	RADIUS
L	ARC LENGTH
Δ	DELTA ANGLE
O.R.B.	OFFICIAL RECORD BOOK
P.O.B	POINT OF BEGINNING
P.O.C	POINT OF COMMENCEMENT
L.A.E.	LIMITED ACCESS EASEMENT
R.O.W.	RIGHT-OF-WAY
P.B.	PLAT BOOK
P.G.	PAGE
U.E.	UTILITY EASEMENT
D.E.	DRAINAGE EASEMENT
⊙	CENTER LINE
⊠	PERMANENT REFERENCE MONUMENT
N.R.	NON-RADIAL
L.S.E.	LIFT STATION EASEMENT
W.L.E.	WATER LINE EASEMENT
S.L.E.	SEWER LINE EASEMENT
P.R.C.	POINT OF REVERSE CURVATURE

NOT PLATTED



DETAIL "B"
N.T.S.

WESTLAKE



DATE	10/02/2001
SCALE	1" = 60'
CAD FILE	85513PLAT.dwg
SSK PROJECT	00074
DRAWN	SFRN STAFF
CHECKED	G. RAYMAN

SHEET	3/3
JOB NO.	00074

1201 BELVEDERE ROAD, WEST PALM BEACH, FLORIDA 33405
PH (561)855-1151 • FAX (561)832-9390 • WWW.SFRNINC.COM

Y:\Land Projects R2\00074\00074\00074PLAT.dwg 07/24/2002 01:22:51 PM EDT